

FASTfell

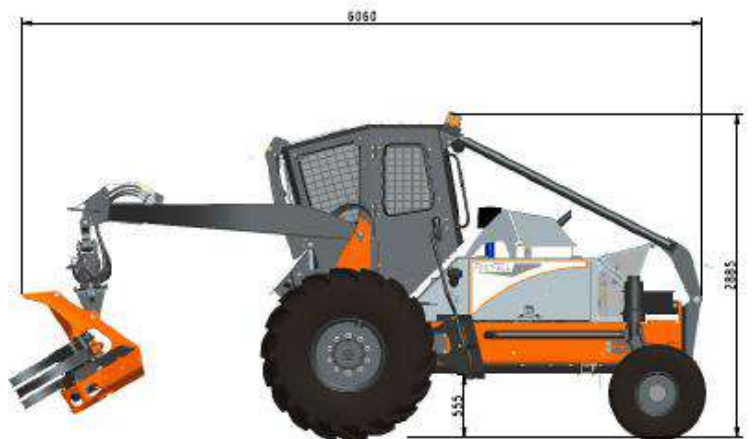
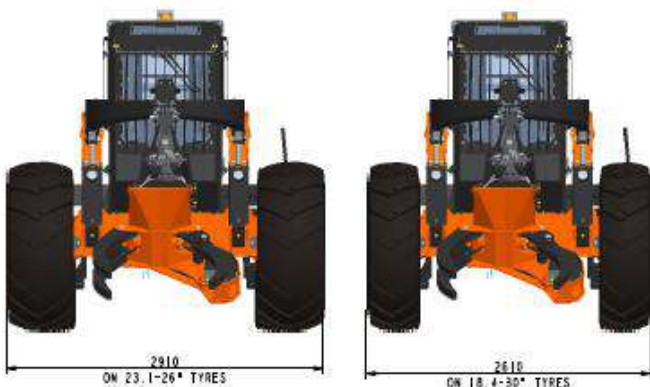
Timber Felling Machine

MECHANISED FELLING // PRODUCTIVITY // DURABILITY // SIMPLICITY



FRONT VIEW

SIDE VIEW



ENGINE	
JCB Diesel Max 444 T2 NA 63 kW (84 HP) @ 2200 RPM - 4.4 ltr, 4-Cylinder, Direct Injection	
Peak torque - 320Nm (236 lb-ft) @ 1200 RPM	
Mechanical engine - Equipped with a dry element filtration system with secondary safety element	
On-board electronic engine protection system	
Fuel Tank Capacity - 100 litres	
DRIVE SYSTEM	
Hydrostatic Drive System - variable displacement, axial piston pump	
Two Speed	
Two Wheel Drive	
Maximum Speed of 11 KPH	
AXLES AND TYRES	
Rigid Front Axle	
Oscillating Rear Axle with heavy duty dual caster wheels for enhanced stability	
Steering by differential drive - operator pedal controlled	
Tyre Size - Front	23.1 – 26 (Standard) 18.4 – 30 (Option)
Tyre Size - Rear	400/60 - 15.5
BRAKES	
Hydrostatic dynamic braking system	
Spring applied, hydraulic release park brake	
FELLING HEAD AND ROTATOR	
Free Hanging Felling Head – Matriarch MT50FH	
Maximum Cut Diameter - 520 mm (20 inches)	
Saw Unit - Hultdins Supercut	
Rotator - Indexator GV124S	
HYDRAULIC SYSTEM	
Tandem gear pump	
Flow Rate	120 ltrs/min @ 1600 RPM
System Pressure	21 Mpa
Split control valve - optimal flow sharing	
Low effort pilot operated controls	
Hydraulic tank capacity	100 Litres
ELECTRICAL SYSTEM	
Single battery	12V
Alternator	14 volt 95 amp
LED worklights, reverse alarm & hooter	
OPERATOR STATION	
Good visibility all around the machine from the operator position	
Rubber mounted operator cab	
Glazed and air-conditioned operator cab	
Ergonomic operator controls - single joystick primary control	
Instrumentation - LCD display for all systems parameters monitoring and diagnostics	
WEIGHTS AND DIMENSIONS	
Overall Width (23.1 – 26)	3000mm
Overall Width (18.4 – 30)	2650mm
Operating Weight	5800KG

